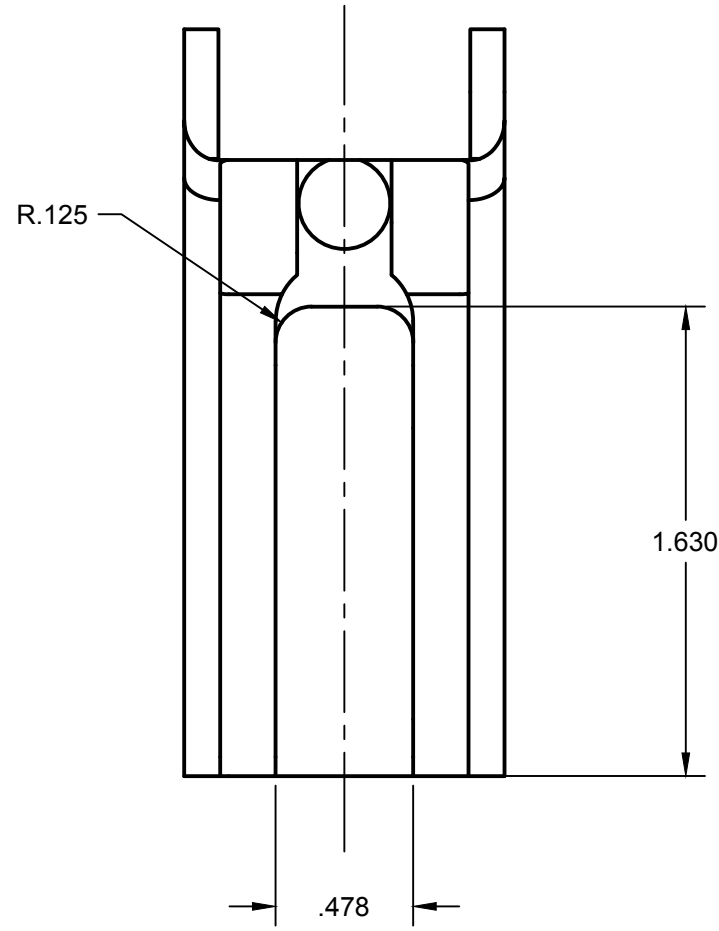
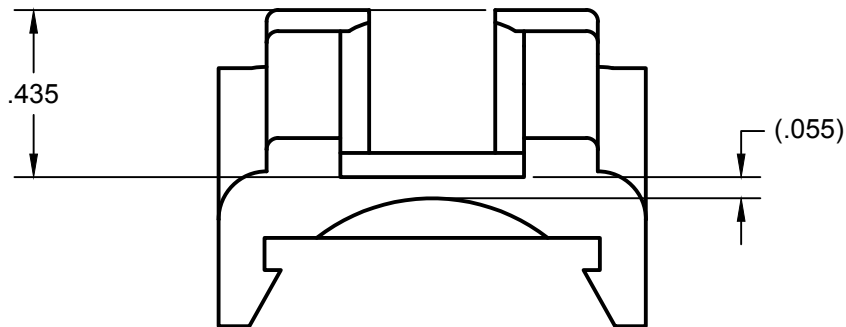
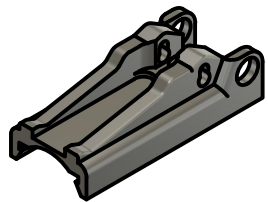


KNS AK Precision Rear Sight KOP Clearance Cut Modification



Using a .250 end mill, cut a slot to these specifications to allow a KNS AK Precision Rear Sight to be installed in a Sabrewerks KOP iron sight adapter base.



WARNING: This document may contain technical data whose export is restricted by the Arms Export Control Act (Title 22, Sec. 2751, et seq.), International Traffic in Arms Regulations, (ITAR) 22 120-130, and/or the Export Administration Act of 1979, as amended (Title 50, U.S.C., App. 2401 et seq.). Violations of these export laws are subject to severe criminal penalties.

PROPRIETARY AND CONFIDENTIAL: The information contained in this drawing is the sole property of KNS Precision, Inc. Any reproduction in part or as a whole without the written permission of KNS Precision, Inc. is prohibited.

Unless Otherwise Specified:
 Material:
 Finish:
 Chamfer Edges:
 Inside Corner Fillet: .003R
 Dimensions are in Inches
 Standard Tolerances:
 Angular: +/- 1°
 Two Place Decimal: +/- .010
 Three Place Decimal: +/- .003

TITLE
 KOP Iron Sight Adapter Modification Geometry



| | | | | |
|-----------|---------------------|-----------|---------|--------|
| APPROVED | | DWG NO | | REV 1 |
| CHECK | DRAWN Daniel Fisher | | 2/12/20 | SIZE A |
| SCALE 2:1 | | SHEET 1/1 | | |